



Pinal Gila
Community
Child Services

Annual Report 2021

Working passionately to elevate the quality of life and promote **school readiness** for children and families.

Message from our CEO

Confronted with another year of unique challenges, Pinal Gila Community Child Services (PGCCS) finds a way to persevere! We do it by constantly challenging the status quo and striving for even greater levels of excellence. We never stop learning; instead we ask the hard questions and keep adapting.

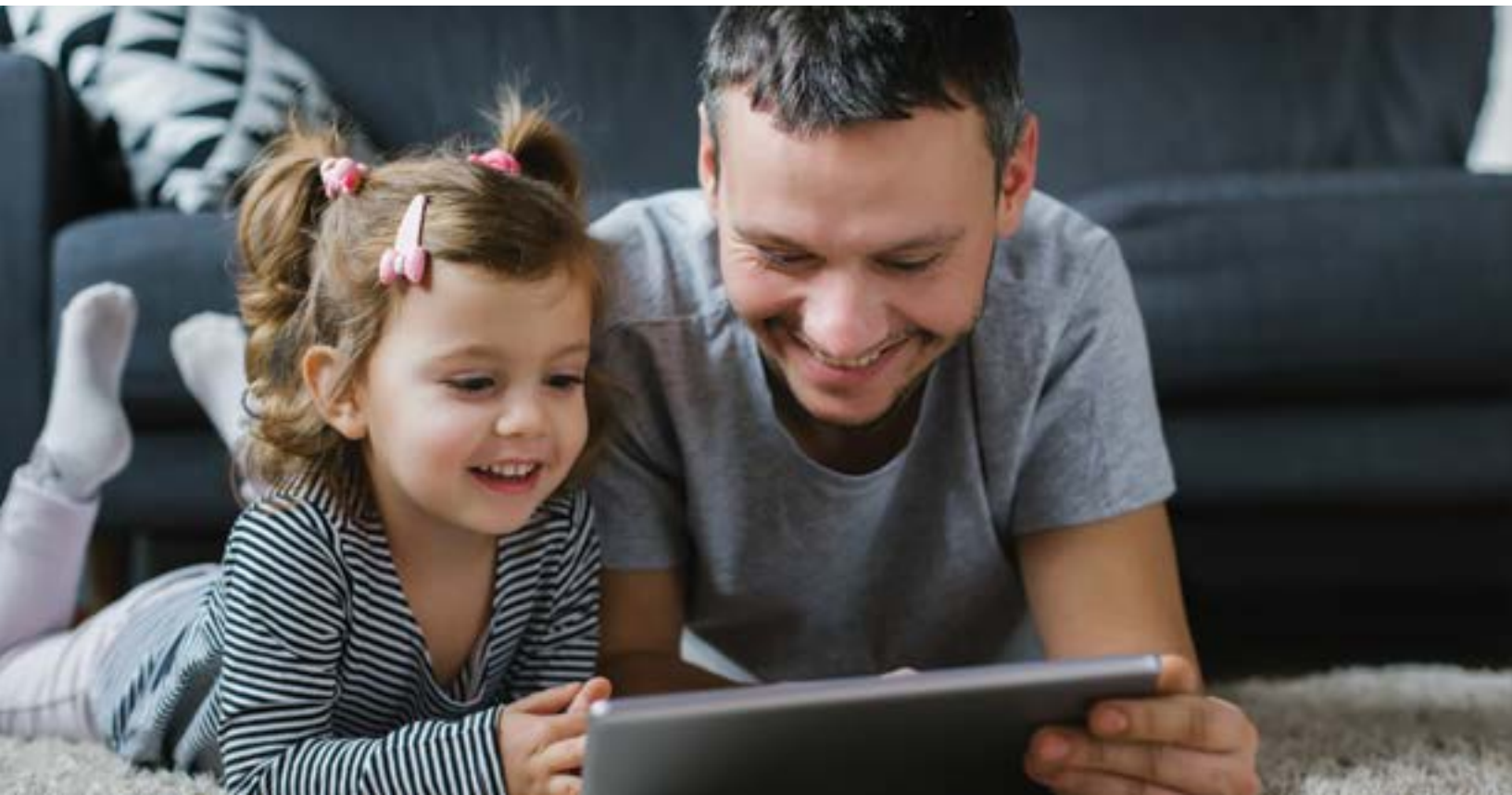
PGCCS continues to battle the long-lasting COVID-19 pandemic along with the new Delta variant. We strive to mitigate risk and at the same time reopen our sites and classrooms with much care and caution, keeping our children, families, and staff safe as a primary goal. We experienced many challenges over the last program year with staffing patterns and continued services. We worked diligently to provide quality program services to the families we serve. Additionally, we provided much-needed support for our staff in an unwavering environment of change.

Head Start is a protective factor giving children from at-risk backgrounds the skills they need to be successful in school and life—supporting children, families, and communities on their path to success.

Together, with a great staff, we are providing comprehensive early education at a crucial time when families need us the most. Engaging parents as equal partners with their child's teacher and working closely with local communities to adapt to each area's needs has been critical as we continue to face this unprecedented time.

Respectfully,

Charity Russell, CEO



REVENUE SOURCES	BUDGET 19-20
Early Head Start	\$3,446,949.00
Head Start	\$8,153,393.00
COVID1 - CARES	\$526,804.00
COVID2 - CRSSA	\$241,377.00
Total In-kind	\$886,751.00
Total Agency Revenue	\$13,255,274.00

In 2020-21, PGCCS supported 9% of eligible low-income children in Pinal and Gila counties. Due to the Covid-19 pandemic, enrollment was reduced to safely serve children and follow CDC guidelines. The agency served 16 pregnant women and 564 children.

RESULTS OF THE MOST RECENT AUDIT:

Audit 2019-2020 completed by HBL CPAs, P.C. in May 2021, No findings.

19-20 ACTUAL EXPENDITURES	HEAD START	EARLY HEAD START
Personnel Salaries	\$6,368,030.99	\$2,790,652.73
Supplies	\$519,903.33	\$166,195.24
Equipment	\$120,484.62	\$9,586.24
Contractual	\$209,388.08	\$69,724.18
Training	\$88,599.00	\$73,032.00
Other Expenses	\$846,986.98	\$337,758.61
In-Kind	\$452,243.01	\$434,507.99
Totals	\$8,605,636.01	\$3,881,456.99



2020-2021 Head Start School Readiness

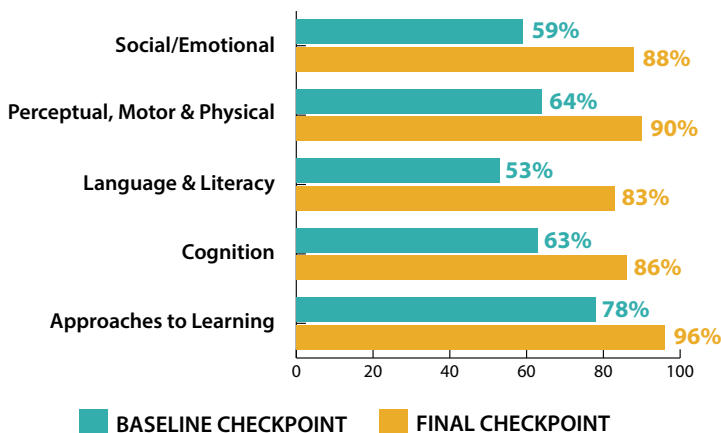
Head Start, above all else, is a school-readiness program.

PGCCS's School Readiness Goals are centered around the 5 developmental areas defined in the Head Start Early Learning Outcomes Framework (HSELOF): Social Emotional; Perceptual, Motor, and Physical; Cognition; Language & Literacy; and Approaches to Learning.

Our curricula and on-going assessments support children's growth in all areas of development and include parent input so we can best plan for the individual needs of each child receiving services.

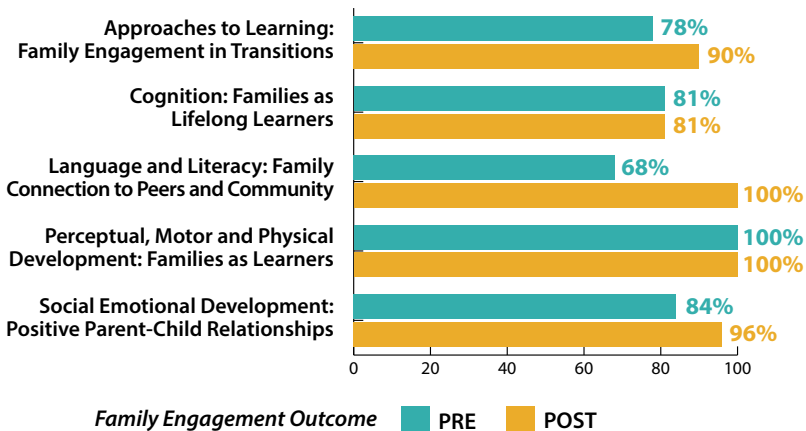
Despite the challenges of the pandemic, the 2020-21 Goal progress shows families and teaching staff worked together to assist in the children progressing in all areas.

Children Meeting or Exceeding Age-Expectations



Our Family Engagement Goals are based upon the Head Start Parent Family Community Engagement framework and support the PGCCS School-Readiness Goals.

School Readiness PFCE Outcomes 20-21



MEDICAL AND DENTAL



- Enrolled children that received medical exams: 58%
- Enrolled children that received dental exams: 50%

PARENT PARTICIPATION



- Virtual Orientation due to COVID-19 safety protocol
- Mental Health consultations provided at parent's request
- Nutrition consultations based on need and parent's request
- Individual Health Plans / Dental Outreach
- Policy Council / Local Parent Committee
- FTF - Chicka Chicka Zoom Zoom Virtual Literacy Workshops
- Virtual meetings due to COVID-19
- Working with their children virtually on educational activities

TRANSITION TO KINDERGARTEN



Activities completed by sites

- Kinder Round-up information given & link to the virtual round-up
- Virtual Tour of schools
- School district representative joined LPC meeting for questions
- Give families links for registration
- Provide list of nearby schools & phone numbers
- Transition activity ideas for parents to work on at home
- Get Ready for school backpacks with activities included given to all children moving on to Kinder
- Kindergarten Activities – children learn about what Kindergarten might look like
- Practiced carrying a tray of food for the cafeteria-experience

FAMILY DYNAMIC



- 502 families served
- 261 single parent families
- 241 two parent families
- 313 families with one or both parents employed
- 28 with bachelor's or advanced degree
- 162 with associate degree, vocational or some college
- 218 with high school diploma
- 94 with less than a high school diploma
- 49 homeless families
- 50 foster families
- 2 currently in the military families
- 16 military veteran families

TRANSITIONS



- 42 transitioned from EHS to HS
- 193 transitioned from HS to Kindergarten

PROGRAM ELIGIBILITY



- Live in Pinal or Gila County
- Birth to 5 years old
- Families experiencing homelessness
- Children in foster care
- Children with disabilities up to 10% of enrollment
- Family income at or below the federal poverty level, based on family size
- Over-income with special circumstances

FAMILY DEVELOPMENT CREDENTIAL



- 1 staff achieved

A close-up photograph of a woman with long dark hair, smiling warmly as she holds a baby. The woman is wearing a light-colored top. The baby is wearing a grey sweater. The background is softly blurred, suggesting an indoor setting with natural light.

2020-21 SCHOOL YEAR

AGENCY

Cumulative Enrollment	564
Had Health Insurance	99%
Well-Child Exams	58%
Chronic Medical Condition Diagnosed	7%
Chronic Diagnosed Received Treatment	83%
Immunizations Received	91%
Received Preventive Dental Care	46%
Developmental Screenings	97%
Diagnosed Developmental Disability	14%

3-5 YEAR OLDS

Received Dental Exam	50%
Underweight	4%
Normal Weight	59%
Overweight	13%
Obese	18%

PREGNANT WOMEN

Enrollment	16
Had Health Insurance	100%
Received Prenatal Health Care	94%
Received Postpartum Health Care	64%

Throughout the Pandemic, we noticed parents were not taking their children to well visits. We surveyed medical providers to get their safety protocols, office hours, and other information to share with parents. We provided training and educational handouts to staff to help encourage parents to take their children to well visits. These efforts did not completely solve the issue, but it did significantly increase well exam visits by the end of the program year.

Grateful for Head Start

"Head Start has been incredibly supportive with our family and with four kids under the age of five, they have made this transition much easier for us. The girls have thrived in Center Base and love going to school. In just three weeks of the site being open the girls can now write their names. With the help of my Home Base Teacher, I have been able to help one of the boys increase his attention span and he now knows all his colors. I have learned about E-Parenting and have implemented it with all the kids. I can tell that they can now recognize their own feelings as well as other emotions. I am so grateful for the Head Start Program and all their support and genuine concern for the kids."

- Kimberly Boragini



Board of Directors

Linda Good – President
Jesse Kraus – Vice President
Caryl Chase – Secretary
Tracy Anders – Treasurer
Aimee Powell - Member
Andrew Gallegos - Member
Amy Curtiss - Member
Genette Felix – PC Representative
Vickie Nguyen – PC Representative

Communities Served

Apache Junction	Maricopa
Casa Grande	Miami
Coolidge	Oracle
Eloy	San Manuel
Florence	San Tan Valley
Globe	Stanfield
Hayden	Superior
Kearny	Toltec
Mammoth	Winkelman

Directors Team

Charity Russell – CEO
Claudine Sabel – DCEO
Stacy Hernandez – Operations Director

Vanessa Mendoza – Finance Director
Carla Ramsey – Program Director



Pinal Gila
Community
Child Services

Administration Office

1183 E Cottonwood Lane, Suite 2
Casa Grande, AZ 85122

Phone: (888) 723-7321 | Fax: (520) 836-9672

www.pgccs.org

Locations

Apache Junction Head Start

900 N. Plaza
Apache Junction, AZ 85120

Casa Grande Head Start

468 W. McMurray Blvd.
Casa Grande, AZ 85122

Coolidge Head Start

227 W. Pinkley Ave.
Coolidge, AZ 85128

Eloy Head Start

114 E. 3rd St. / P.O. Box 293
Eloy, AZ 85131

Florence Head Start

40 E. Celaya St. / P.O. Box 2272
Florence, AZ 85132

Mammoth Head Start

324 S. El Camino
San Manuel, AZ 85631

Maricopa Head Start

44931 W. Edwards Circle
Maricopa, AZ 85139

Miami Head Start

131 N. Plaza Circle
Miami, AZ 85539

San Tan Valley Head Start

301 E. Combs Rd. Room 505
San Tan Valley, AZ 85140

Stanfield Head Start

515 S. Stanfield Rd. / P.O. Box 205
Stanfield, AZ 85172

Superior Head Start

150 N. Lobb Ave. / P.O. Box 386
Superior, AZ 85273

Toltec Head Start

3720 N. Marsh St. / P.O. Box 74
Eloy, AZ 85131

Winkelman Head Start

824 Thorne Ave. / P.O. Box 678
Winkelman, AZ 85192

